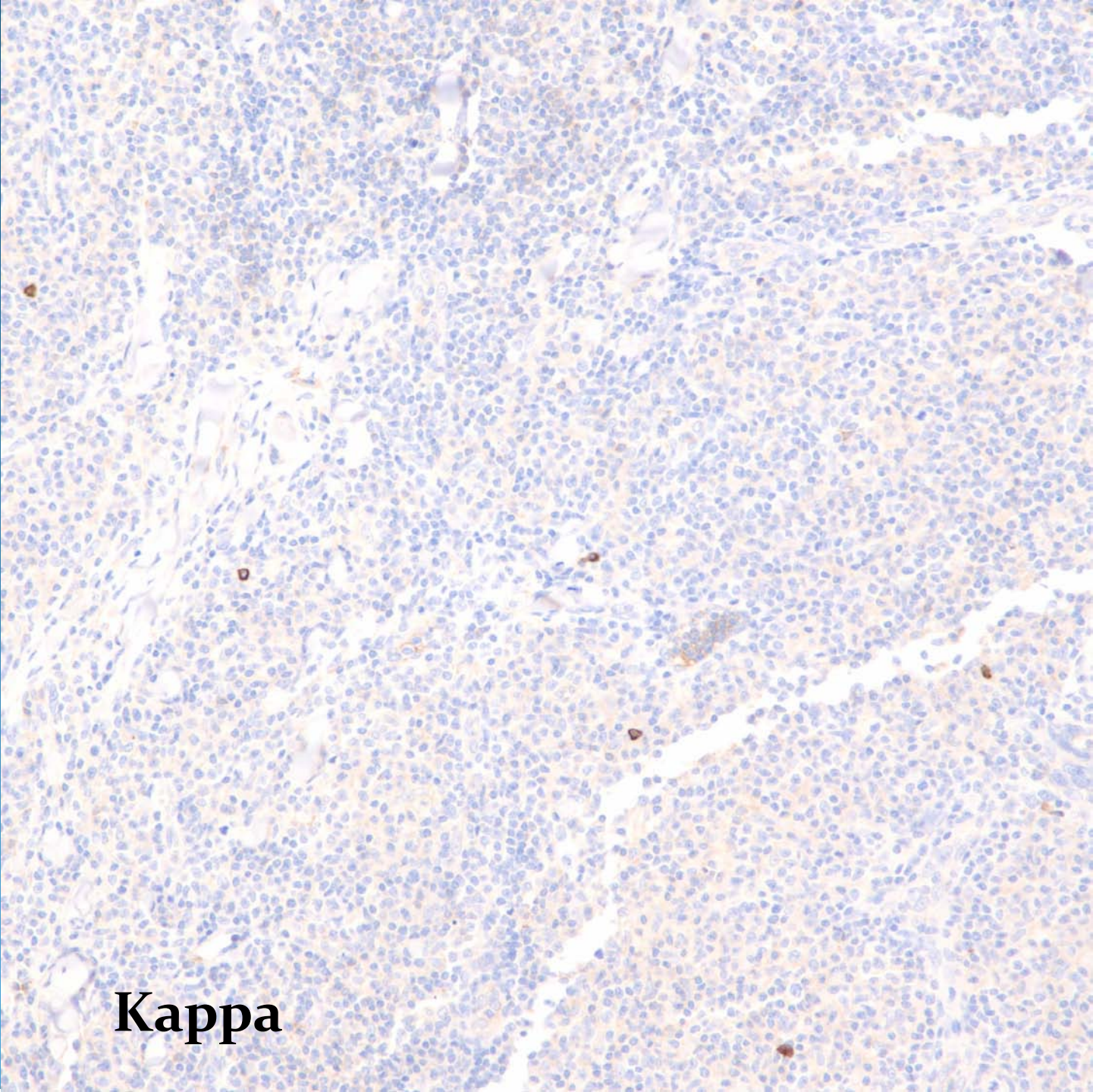


CD79

A histological slide showing a dense population of cells, likely lymphocytes, stained with hematoxylin and eosin (H&E). The nuclei are stained blue, and the cytoplasm and extracellular matrix are stained pink. There is a prominent brown staining, which is characteristic of immunohistochemistry (IHC) using a chromogen like DAB (3,3'-diaminobenzidine). The brown staining is distributed throughout the tissue, indicating the presence of the target antigen. The overall appearance is that of a highly cellular tissue, possibly a lymphoid organ or a site of inflammation.

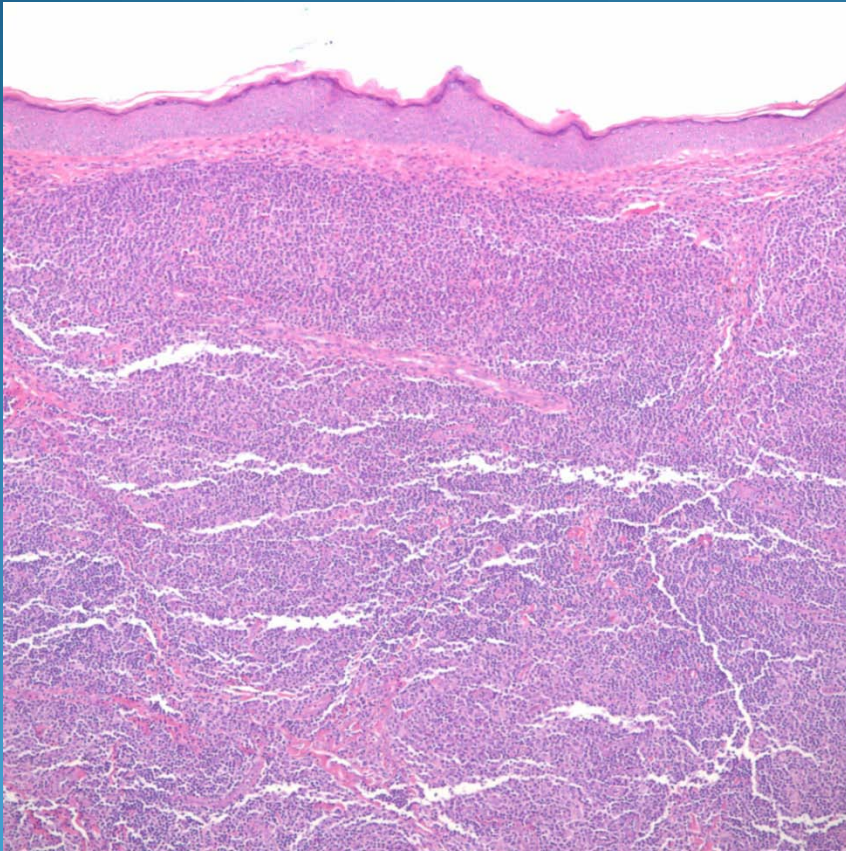
Lambda



Kappa

Immunocytopoma

Pearls



- Nodular and diffuse lymphoid infiltrate separated from epidermis with Grenz zone
- Suggestion of follicle centers
- Numerous plasma cells
- Confirm by B-cell marker s and light chain restriction